

B2 - GROUND - 203	
APARTMENT	48m ²
DECK	12m ²
YARD	8m ²

B2 - LEVEL 1 - 212	
APARTMENT	48m ²
BALCONY	9m ²

B2 - LEVEL 1 - 213	
APARTMENT	48m ²
BALCONY	9m ²

B2 - LEVEL 2 - 222	
APARTMENT	48m ²
BALCONY	9m ²

B2 - LEVEL 2 - 223	
APARTMENT	48m ²
BALCONY	9m ²

B3 - GROUND - 303	
APARTMENT	48m ²
DECK	16m ²
YARD	10m ²

B3 - LEVEL 1 - 312	
APARTMENT	48m ²
BALCONY	9m ²

B3 - LEVEL 1 - 313	
APARTMENT	48m ²
BALCONY	9m ²

B3 - LEVEL 2 - 322	
APARTMENT	48m ²
BALCONY	9m ²

B3 - LEVEL 2 - 323	
APARTMENT	48m ²
BALCONY	9m ²

B4 - GROUND - 402	
APARTMENT	48m ²
DECK	12m ²
YARD*	7m ²

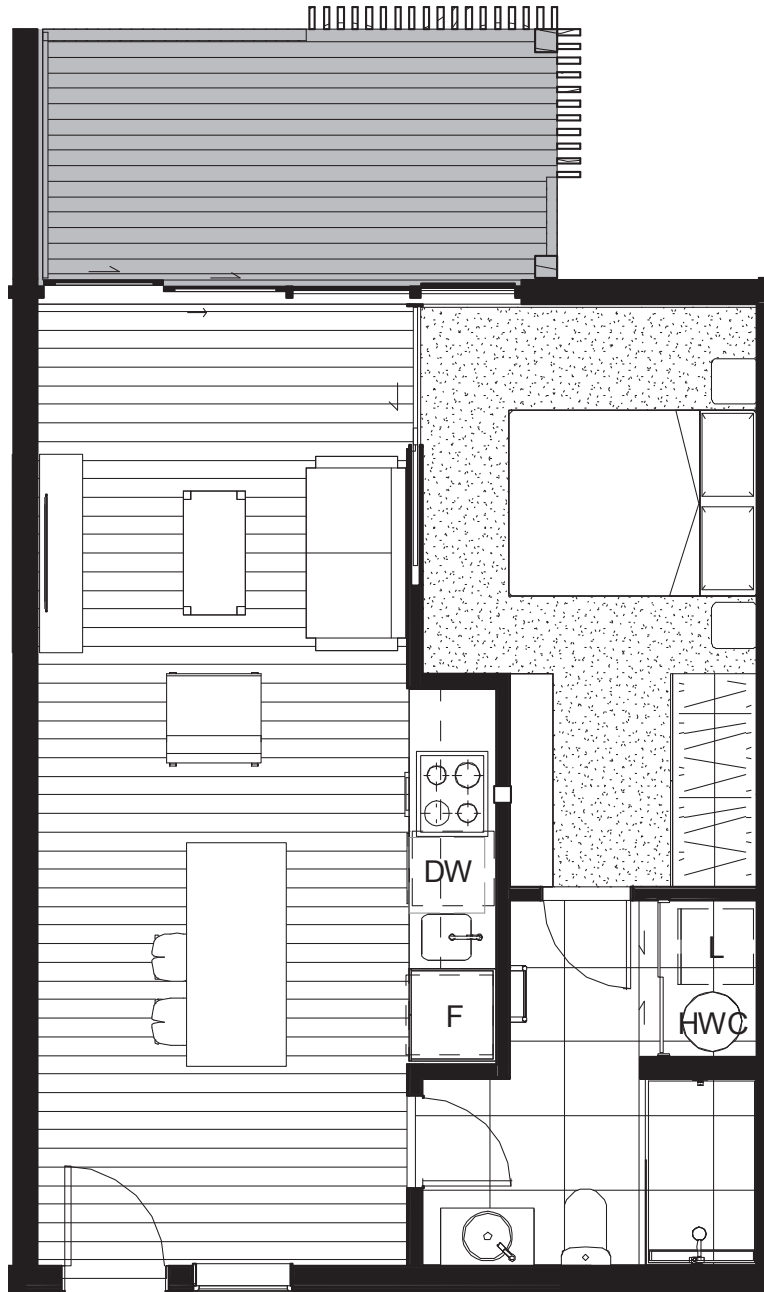
B4 - GROUND - 403	
APARTMENT	48m ²
DECK	12m ²
YARD*	6m ²

B4 - LEVEL 1 - 412	
APARTMENT	48m ²
BALCONY	9m ²

B4 - LEVEL 1 - 413	
APARTMENT	48m ²
BALCONY	9m ²

B4 - LEVEL 2 - 422	
APARTMENT	48m ²
BALCONY	9m ²

B4 - LEVEL 2 - 423	
APARTMENT	48m ²
BALCONY	9m ²



Bayleys Real Estate Ltd,
Licensed under the REAA 2008

TYPICAL APARTMENT TYPE A

1 BEDROOM



NORTH

